

ARTWORKS TOWER



ARTWORKS TOWER

WHAT'S IN A NAME

Art does, in fact, 'work.' It works to unite us, to excite us, and to put us on the world stage. You may not know this, but art has been 'working' in Regent Park long before the revitalization. Now, more than ever, we celebrate the achievements of a community coming into its colourful own...with Artworks.

Coming to the northwest corner of Dundas Street East and River Street, **ARTWORKS Tower** will rise 32-stories above this world-renowned, lively neighbourhood.

ARTWORKS Tower features modern, studio to three-bedroom plus den suite designs, a spectacular, gallery-like lobby, inventive amenities, and stunning finishes. Everything about Artworks will stimulate your senses and challenge your expectations.

Go ahead...be inspired by where you live.



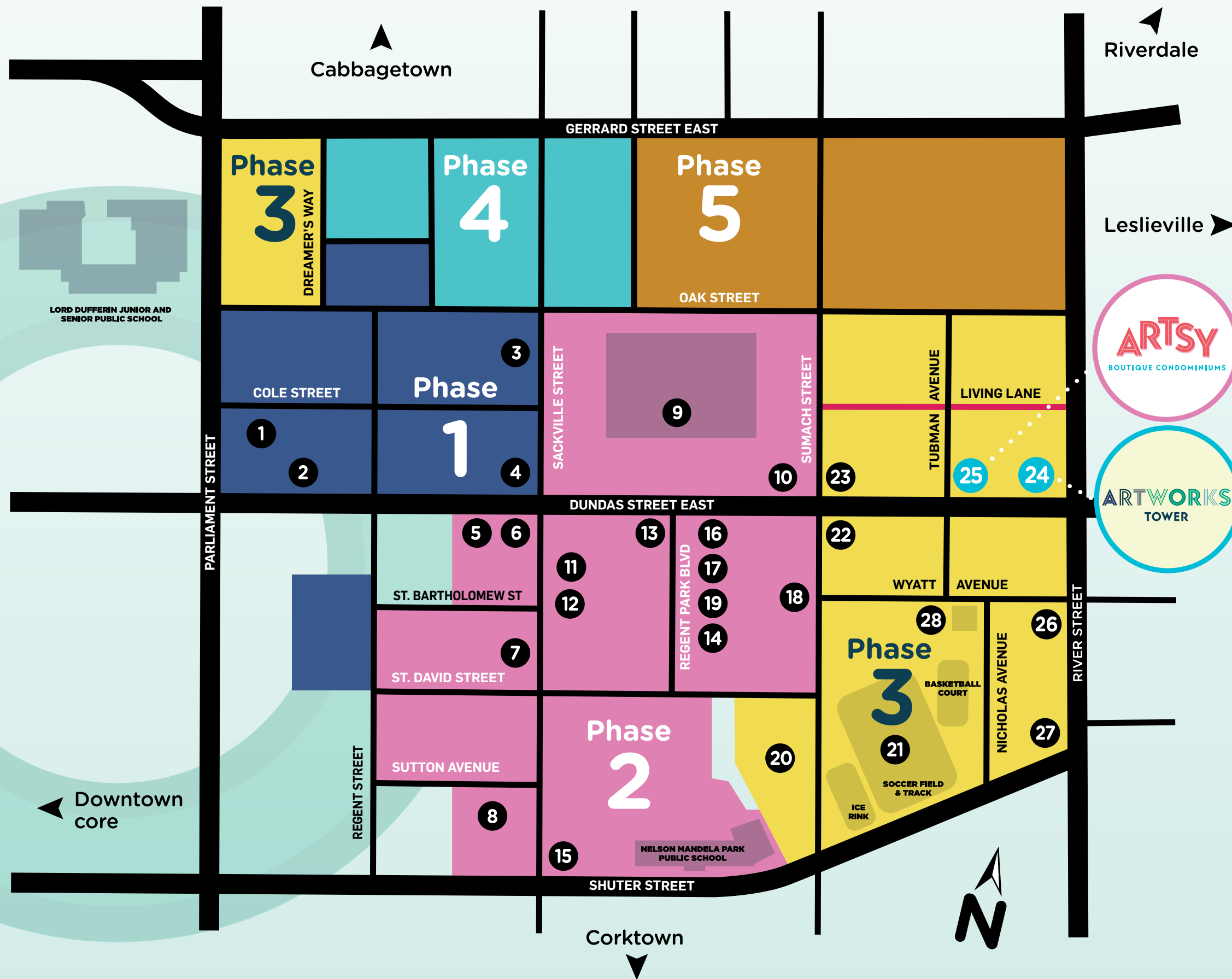
REGENT PARK – ART DEFINES US

A community of many – coming together to make music, to dance, to speak poetic truth, to celebrate culture, to discover new food, to paint and weave colourful threads into a neighbourhood tapestry – this is Regent Park.

The renaissance in Toronto's Downtown East is led by the amazing revitalization underway in Regent Park, and while the world is watching, this vibrant community continues to flourish. Art-focused amenities, along with a wide selection of premium retail and entrepreneurial businesses, work in harmony to make Regent Park a one-of-a-kind neighbourhood. **It's time to make your own creative statement in ARTWORKS Tower.**



live creatively IN REGENT PARK



- 1 ONECOLE CONDOMINIUMS
- 2 NATIONAL BRAND RETAILERS
FRESHCO • TIM HORTONS • RBC
- 3 ONEPARK WEST BOUTIQUE
CONDOMINIUMS & TOWNHOMES
- 4 TD CENTRE OF LEARNING
- 5 TORONTO BIRTH CENTRE
- 6 DUNDASEAST DENTAL
- 7 THE BARTHOLOMEW CONDOMINIUMS
& TOWNHOMES
- 8 THE SUTTON COLLECTION
- 9 REGENT PARK 6-ACRE PARK
- 10 PAM McCONNELL AQUATIC CENTRE
- 11 PAINTBOX BISTRO
- 12 PAINTBOX CONDOMINIUMS
- 13 DANIELS SPECTRUM
- 14 THE URBAN MEWS ON
REGENT PARK BOULEVARD
- 15 REGENT PARK COMMUNITY CENTRE
- 16 NATIONAL BRAND RETAILERS
SHOPPERS DRUG MART • SUBWAY • WENDY'S
YOGEN FRÜZ • TIM HORTONS • ENTERPRISE CARSHARE
611 THE SHOP • ROGERS
- 17 SUMAC CREEK HEALTH CENTRE
- 18 ONE PARK PLACE CONDOMINIUMS
NORTH & SOUTH
- 19 GEORGE BROWN COLLEGE
FASHION EXCHANGE
- 20 THE SUMACH BY CHARTWELL
- 21 REGENT PARK ATHLETIC GROUNDS
- 22 THE WYATT CONDOMINIUMS
WINE RACK • LE BEAU • F45 • SCOTIABANK
- 23 DUEAST CONDOMINIUMS
- 24 ARTWORKS TOWER
- 25 ARTSY BOUTIQUE CONDOMINIUMS
- 26 FIELD HOUSE ECOURBAN TOWNS
- 27 EVOLV RENTALS
- 28 DIXON HALL YOUTH CENTRE

Map is not to scale and is subject to change due to municipal and other regulatory approvals. Illustration is artist's concept. E. & O. E.



REGENT PARK, TORONTO'S DOWNTOWN EAST



PAM McCONNELL AQUATIC CENTRE



THE BARTHOLOMEW CONDOMINIUM SUITES & TOWNHOMES



ONE COLE CONDOMINIUMS



DANIELS SPECTRUM



CITY OF TORONTO COMMUNITY CENTRE



THE SUMACH BY CHARTWELL



REGENT PARK ATHLETIC GROUNDS



ONE PARK PLACE CONDOMINIUMS / LEADING RETAIL



6-ACRE PARK SPLASH PAD



PAINTBOX BISTRO

LOOKING FOR AN ARTFULLY DESIGNED NEIGHBOURHOOD?

Look no further. You will find yourself surrounded by all the urban amenities you desire, from a huge 6-acre park (featuring off-leash dog park, bake oven, splash pad and playground) to Pam McConnell Aquatic Centre, Regent Park Athletic Grounds, Daniels Spectrum, Regent Park Community Centre, dining, grocery shopping, entertainment and so much more!

LEADING COMMUNITY RETAILERS:

- SHOPPERS DRUG MART • RBC • SUBWAY • WENDY'S
- ENTERPRISE CARSHARE • TIM HORTONS • F45
- YOGEN FRÜZ • ROGERS • 611 THE SHOP
- WINE RACK • SCOTIABANK • LE BEAU



SHAWN SKEIR

ART WORKS IN REGENT PARK

DAN BERGERON – VISUAL ARTIST

Dan Bergeron is a visual artist whose work examines, reimagines and exists in the public landscape. Dan's projects are sometimes commissioned and sometimes un-commissioned, sometimes temporary and sometimes permanent. They take multiple forms: large-scale figurative portraits adhered to architectural elements, functional sculptures, murals, billboard interventions and mixed-media paintings installed in public spaces. This variety reflects Dan's interest in using a range of public materials and infrastructures to engage in a conversation about the history, current uses and social meaning of our public spaces. While the majority of Dan's work is exhibited publicly, he also maintains a studio practice that forms the basis of his public art and gallery exhibitions.

You can find Dan's *Faces of Regent Park* permanently displayed in the neighbourhood – showcasing twelve portraits, that as a cross-section, represent everyone who has, does, or will live in Regent Park; and remind us that it is through our differences that we gain strength, and through our personal relationships that we create community.



SITE PLAN

YOU CAN
BE HERE.
IN TORONTO'S
REVITALIZED
DOWNTOWN EAST.



Regent Park's tallest tower makes a 32-storey statement, rising above the northwest corner of Dundas Street East and River Street. This thoroughly urban location will put you steps away from the Dundas East streetcar, the 6-acre park, the world-class Pam McConnell Aquatic Centre, the Athletic Grounds, local shops and restaurants or discover the delightful Living Lane, a new concept that invites you to explore interesting art or work on your bike in the Living Lane's Workshop.

This is your *everything-I-always-wanted* downtown neighbourhood and it's waiting for you to call it home!

WELCOME TO THE 'WOW FACTOR'

Imagine walking into this beautiful lobby for the first time. From the tall glowing ceilings to the glamorous windows to dramatic artwork that will take your breath away, this is a warm and memorable welcome like no other. Relax in luxurious seating while you wait for your delicious UberEats delivery, greet friends and family, make plans with neighbours and watch the city go by. The **ARTWORKS Tower** lobby is designed to both welcome and WOW in equal measure.

LOBBY





PARTY ROOM

THE OPENING

THE 'OPENING' YOU DON'T WANT TO MISS

An opening is always a momentous occasion – an exciting opportunity to see what's happening, what's new, as well as to catch a glimpse of what's next. At **ARTWORKS Tower, you...** are what's next.

That's why we've designed **The Opening** – from a sophisticated Party Room and Arcade to a lively Kids' Zone for the next generation of creative minds. A Mega Gym your body will thank you for (and so will your wallet) to a place where "working from home" takes on a whole new meaning, The Opening is your invitation to inspiration.



KIDS' ZONE



ARCADE



CO-WORKING SPACE

LIVING LANE

- 4TH FLOOR**
- OUTDOOR**
- 1 Community Gardening Plots
 - 2 Terrace
 - 3 Party Room Patio
 - 4 Co-Working Patio
- INDOOR**
- 5 Co-Working Space
 - 6 Party Room
 - 7 Dining Room
 - 8 Arcade
 - 9 Kids' Zone
 - 10 Garden Prep



THE OPENING

PARTY ROOM

UNFORGETTABLE EVENINGS START HERE

From the glow of elegant cove ceilings to an abundance of plush seating to a spectacular view through the bar to greenery beyond, this is the place to meet (and impress) your friends and family. Chat under gleaming pendant lights, settle into a comfortable sofa or pull up a chair next to your neighbour – you'll have tales to tell in the warm ambience of The Opening Party Room.



'WORKING FROM HOME' NEVER LOOKED THIS GREAT

Choose to work in sunshine, on the patio or pick an area in the comfortable, well-appointed Co-Working Space with printing services and a spacious meeting room.

**THE
OPENING**
CO-WORKING SPACE



THE OPENING ARCADE

THIS IS WHERE FUN
MEETS COMPETITION

If active fun is more your style, then put your skills to the test in the old-school Arcade.



THE OPENING KIDS' ZONE

CREATIVE PLAY FOR
THE NEXT GENERATION

A super fun play area that will help kids
discover their creative potential.



CREATE A MASTERPIECE. CREATE A BETTER YOU.

It's easy to start a fitness regime or maintain the healthy habits you've cultivated when a state-of-the-art gym is steps from your door. With everything from the latest cardio machines, weights, fitness equipment and yoga (choose indoor or fresh air patio), you'll be stretching, lifting, running and jumping into the best shape of your life. Plus, with outdoor strength training and yoga areas, you can enjoy the great outdoors while you work out. Did we mention there's no expensive membership fee?



3RD FLOOR

- 1 Yoga Studio
- 2 Outdoor Yoga
- 3 Outdoor Fitness and Strength Space
- 4 Mega Gym



OUTDOOR FITNESS, STRENGTH AND YOGA SPACE



**THE
OPENING**
MEGA GYM



ART WORKS IN REGENT PARK

GADFLY – CHOREOGRAPHERS | CREATIVE DIRECTORS | MOVEMENT COACHES

GADFLY's artistry sits where urban dance roots and other creativities collide and tune together. Artistic directors Ofilio Sinbadinho and Apolonia Velasquez merge art with entertainment through the authenticity, artistry, and athleticism found in their signature Aybrid Movement. GADFLY's body of work includes full-evening works, performances at TED Talks Toronto, Nuit Blanche, Luminato, Festival DansEncore, and for several charitable organizations. With 'Klorofyl', GADFLY was the recipient of the Dora Mavor Moore Award for Outstanding Performance. GADFLY is a Repertoire Dance Company that has been moving people, pulsing questions and cooking worlds since 2006.

Born from Chilean and Guatemalan parents, Apolonia Velasquez and Salvadorian native Ofilio Sinbadinho Portillo have been creative collaborators since 2000. Now residing in Regent Park, they established in Toronto the first Urban Dance rooted dance company - GADFLY.

GADFLY directors' choreographic work now includes 50+ repertoire works, a K.M. Hunter award, and several collaborations. They have been commissioned to create work across Canada for the likes of Decidedly Jazz Danceworks, Coleman Lemieux & Compagnie, Canadian Contemporary Dance Theatre, Ryerson University, the School of Toronto Dance Theatre, Nike, and Make Up For Ever. Their works have been presented in festivals such as 100Lux Montreal and Ontario Dance Weekend. Apolonia and Ofilio are also the founders of the Toronto Urban Dance Festival. www.gadfly.ca



SOPHISTICATED PIECES ARRANGED TO CREATE A BEAUTIFUL PICTURE

At **ARTWORKS Tower**, your suite has been designed to reflect your sense of style, with elegant and contemporary materials sharing the spotlight. You'll find custom-designed kitchen cabinetry with Quartz countertops and European-style stainless steel appliances.



Finishes at ARTWORKS Tower will vary from those shown. E. & O. E.

FORM MEETS FUNCTION

More than just stylish, this contemporary kitchen is equipped to delight those who love to create their masterpieces with delicious ingredients. Efficient design makes room for you to chop, dice and julienne to your heart's content. You'll love spending time in the heart of your new home.

An environment that's good for the environment

The wide expanse behind **ARTWORKS Tower** will be brought to life as a dynamic tree-lined Living Lane — a new concept that animates urban space to maximize its use. Along the Living Lane, you'll find places to sit and relax, drink your coffee or take an art class.

THE LIVING LANE HAS WON THE **AWARD OF MERIT** IN THE TORONTO VISIONS AND MASTER PLANS CATEGORY OF THE 2017 TORONTO URBAN DESIGN.



WORKSHOP

Once you've had your art fix, your bike fix is just next door! Enjoy the use of the **WORKSHOP** to tune-up your bike or paint a favourite piece of furniture. This is the ideal place for your next creative project.

LIVING LANE



YOUR PRIVATE OASIS AWAITS

With green space, lush landscaping, cozy lounge areas as well as barbecues, party room and co-working patio, this will be your at-home getaway. For active green living, enjoy growing your herbs and vegetables in the gardening plots.

OUTDOOR TERRACE



Illustration is artist's concept. E. & O. E.

DANIELS' URBAN AGRICULTURE COMMITMENT

For Daniels, urban agriculture is truly a natural expression of the company. Always thinking outside the box, Daniels has worked hard to incorporate urban agriculture opportunities, such as balcony container gardening, community gardening plots, greenhouses, edible landscaping, and farmers' markets, into our new home communities wherever possible. The resident gardening plots on the 4th floor at **ARTWORKS Tower** will invite green thumbs to come together, establish a deeper sense of community, and feel connected to the earth and to each other.

“ I'm especially impressed with the gardening area, which had a lot to do with my decision. I've seen how gardening brings neighbours together. It's like a bit of country in the city. I look forward to planting in the garden. ”

– MARIE-LAUREN, ONE PARK PLACE RESIDENT



TASTE OF REGENT PARK

This foundation of community has already started with the Taste of Regent Park, which operates weekly in the summer months and celebrates food, arts, and culture.

You'll want to be sure to check it out!



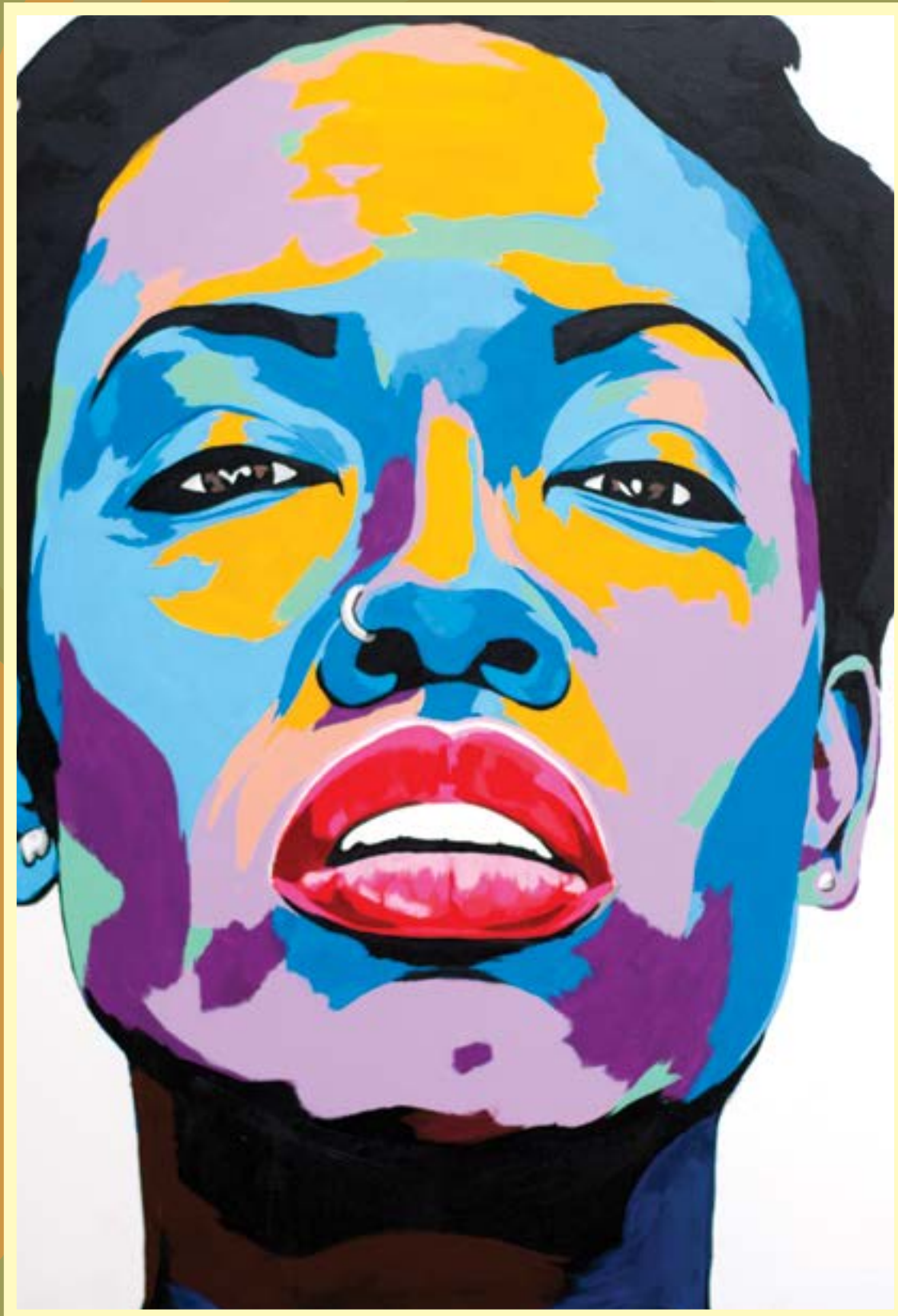
ART WORKS IN REGENT PARK

BENNY BING – PAINTER

Benny Bing is a self-taught Regent Park-based artist of Nigerian descent. His passion for portraiture illuminated through the use of complementing acrylic hues has built him a great following. His ability to capture the emotion on each of his subject's faces shines through in each piece. Bing's cool reoccurring colour palette has built great depth in distinguishing his brand.

Benny has shown in six major solo shows and several group exhibitions, alongside such artists as Fucci, Sandra Chevrier and Pure Evil. He has also been shown at major art fairs in Toronto and Miami. Benny Bing has produced commissions for Dave Chappelle, The Weeknd and Milos Raonic. His works are currently housed at The Norman Rockwell Museum in Massachusetts, The Bartholomew Condominiums, Maple Leaf Sports & Entertainment headquarters in Toronto and can be found in private collections worldwide.

Benny not only lives in Regent Park, but you can find his work throughout the neighbourhood, adding vibrancy and culture everywhere it is shown.



Daniels
love where you live™



**OVER 36 YEARS
AND BUILDING STRONG**

Daniels looks beyond the bricks and mortar, including social, cultural and economic infrastructures that will create a unique sense of place. This commitment has been an integral part of Daniels' corporate philosophy for over 36 years. Daniels has built more than 30,000 award-winning homes, commercial and retail spaces in master-planned, mixed-use communities, earning its standing as one of Canada's largest and pre-eminent builder/developers. Company founder, John H. Daniels, is a towering figure in the North American building industry. In a career that has spanned over 50 years, the former Chairman and CEO of Cadillac Fairview Development Corporation has left an indelible mark on the quality of the places in which people live, work, play, create, grow and shop.

OUR APPROACH

Led by company President Mitchell Cohen and a creative team of visionary professionals, The Daniels Corporation's integration of residential and commercial divisions results in a stable turnkey operation, which earns the company a high level of industry and public trust. Daniels plans, designs, develops, builds, and manages all residential and commercial properties in-house, enabling the ultimate in quality control and streamlined service. In essence, Daniels is an all-inclusive service provider – a company dedicated to seeing each project through to construction completion and beyond.

INNOVATION IN MASTER-PLANNING

Daniels transforms underutilized land into sought-after master-planned communities that include residential, name-brand retail, and commercial opportunities. Daniels' land-use planning is based on the principle of integration into the existing urban fabric, creating neighbourhoods that fit seamlessly into their surroundings and providing

a broad customer base for homebuyers, retailers, and commercial businesses. For example, Daniels is partnering with Toronto Community Housing to revitalize 53 of the 69-acre Regent Park community in Toronto's Downtown East, which is viewed worldwide as the gold standard by which challenged urban neighbourhoods can be reimagined as healthy, sustainable communities.

Daniels also partnered with renowned filmmaker Ivan Reitman to build TIFF Bell Lightbox, an international destination for the world of film. In addition to the iconic home of the Toronto International Film Festival, this mixed-use development includes restaurants, ground-floor retail, a commercial parking garage and the 44-storey Festival Tower Residence. Daniels has also created iconic neighbourhoods throughout the GTA, providing residential, retail and commercial services within their NY Towers and HighPark Condominium communities in Toronto, as well as Daniels City Centre and Daniels Erin Mills communities in Mississauga.

THE DANIELS CORPORATION
BUILDS WITH A PASSION FOR
CREATING VIBRANT COMMUNITIES
IN EVERY SENSE OF THE WORD.



- GREEN DESIGN AWARD
- COMMUNITY OF THE YEAR AWARD (BILD)
- FOUR-TIME WINNER OF THE TARION HIGH-RISE BUILDER OF THE YEAR AWARD
- COMMUNITY OF THE YEAR – URBAN AWARD
- HOME BUILDER OF THE YEAR AWARD



CF TORONTO EATON CENTRE

BUILDING FOR EVERYONE

Dedicated to upholding a “people-first” philosophy, Daniels has long been a champion of affordable rental and ownership housing and has built 3,600 affordable rental-housing units under several government programs. Daniels was the first developer to offer purpose-built rental housing in Mississauga in 26 years through its Gateway Rental portfolio. In partnership with Sun Life Financial, Daniels has built a market rental building as part of its Daniels Erin Mills community, and in Regent Park, Daniels has built a high density independent living building in partnership with Chartwell Retirement Residences. Daniels FirstHome™ Communities across the GTA provide quality-built residences priced within the reach of first-time buyers and, at selected communities, Daniels has built seniors housing in partnership with Amica Mature Lifestyles Inc.

On the commercial end of the spectrum, Daniels creates outstanding business opportunities for national brand companies as well as grassroots non-profit organizations. For over 36 years, Daniels has embraced financial and hands-on generosity toward a number of charities and nonprofit organizations, including Second Harvest, Eva’s Initiatives, FoodShare, Habitat for Humanity, Covenant House Toronto, Egale Canada, Regent Park School of Music, and the Regent Park Film Festival. Daniels is committed to the ongoing development of homeowner programs with a goal to eliminate accessibility barriers.



FESTIVAL TOWER ATOP TIFF BELL LIGHTBOX, TORONTO



WESLEY TOWER, DANIELS CITY CENTRE, MISSISSAUGA



ARC CONDOMINIUMS, ERIN MILLS



THE LOGAN, TORONTO



DANIELS WATERFRONT – CITY OF THE ARTS, TORONTO



DANIELS SPECTRUM, REGENT PARK



ONECOLE CONDOMINIUMS, REGENT PARK, TORONTO



HIGHPARK CONDOMINIUMS, TORONTO



PAINTBOX CONDOMINIUMS, REGENT PARK



THE BARTHOLOMEW CONDOMINIUMS & TOWNHOMES, REGENT PARK



THE SUTTON COLLECTION, REGENT PARK



DUEAST & DUEAST BOUTIQUE RESIDENCES, REGENT PARK



THE WYATT CONDOMINIUMS, REGENT PARK



NY TOWERS COMMUNITY, TORONTO

SUSTAINABILITY

Long before “green” became an industry buzzword, The Daniels Corporation took a proactive approach to protecting the environment through innovation in its construction techniques. Daniels continues to build for efficiency and environmental sustainability through standards beyond the Ontario Building Code, and in some cases, to LEED Gold certification. Within the Canadian building industry, Daniels is also leading the urban food revolution through trailblazing urban agriculture initiatives that

incorporate farmers’ markets and urban allotment gardens into its residential communities.

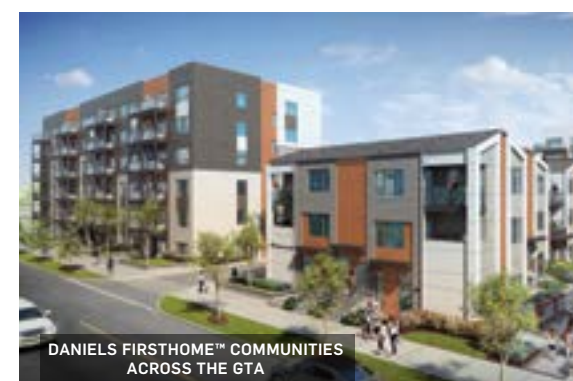
Understanding that quality of life is created by much more than physical buildings, Daniels goes above and beyond to integrate building excellence with opportunities for social, cultural, and economic well-being. In so doing, value is created for everyone.



DANIELS CITY CENTRE, MISSISSAUGA



PROSPERITY PARK, BRAMPTON



DANIELS FIRSTHOME™ COMMUNITIES ACROSS THE GTA

WEAVING ARTS AND CULTURE INTO THE COMMUNITY FABRIC

Daniels has consistently demonstrated the value of embedding arts and culture into the fabric of new communities. In Regent Park, Daniels partnered with Artscape, Toronto Community Housing, and members of the local community to create Daniels Spectrum – a 60,000 square foot cultural hub. Setting Daniels apart even further, the company has established an art procurement program that identifies and purchases art from local and emerging artists for residential and commercial lobbies and amenity spaces, thus contributing enormously to the area’s economic development.

THANK YOU

When you walk around this community, you'll see their work, you'll hear their music and you'll feel a unique rhythm that makes Regent Park a special place. We would like to thank our artist friends for sharing their inspired work throughout this book and this community.

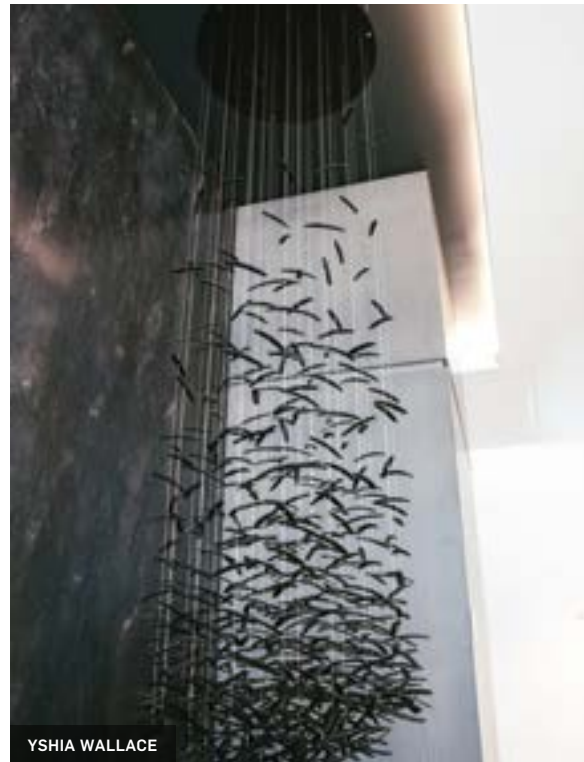
Art works for all of us.



SHAWN SKEIR



MAZHAR



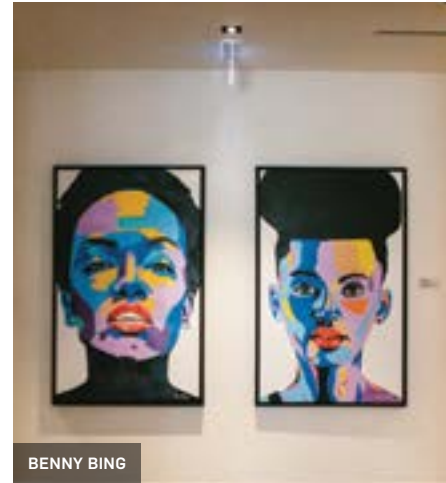
YSHIA WALLACE



SILVIA TAYLOR



CHARMAINE LURCH



BENNY BING



PETER KATTAN

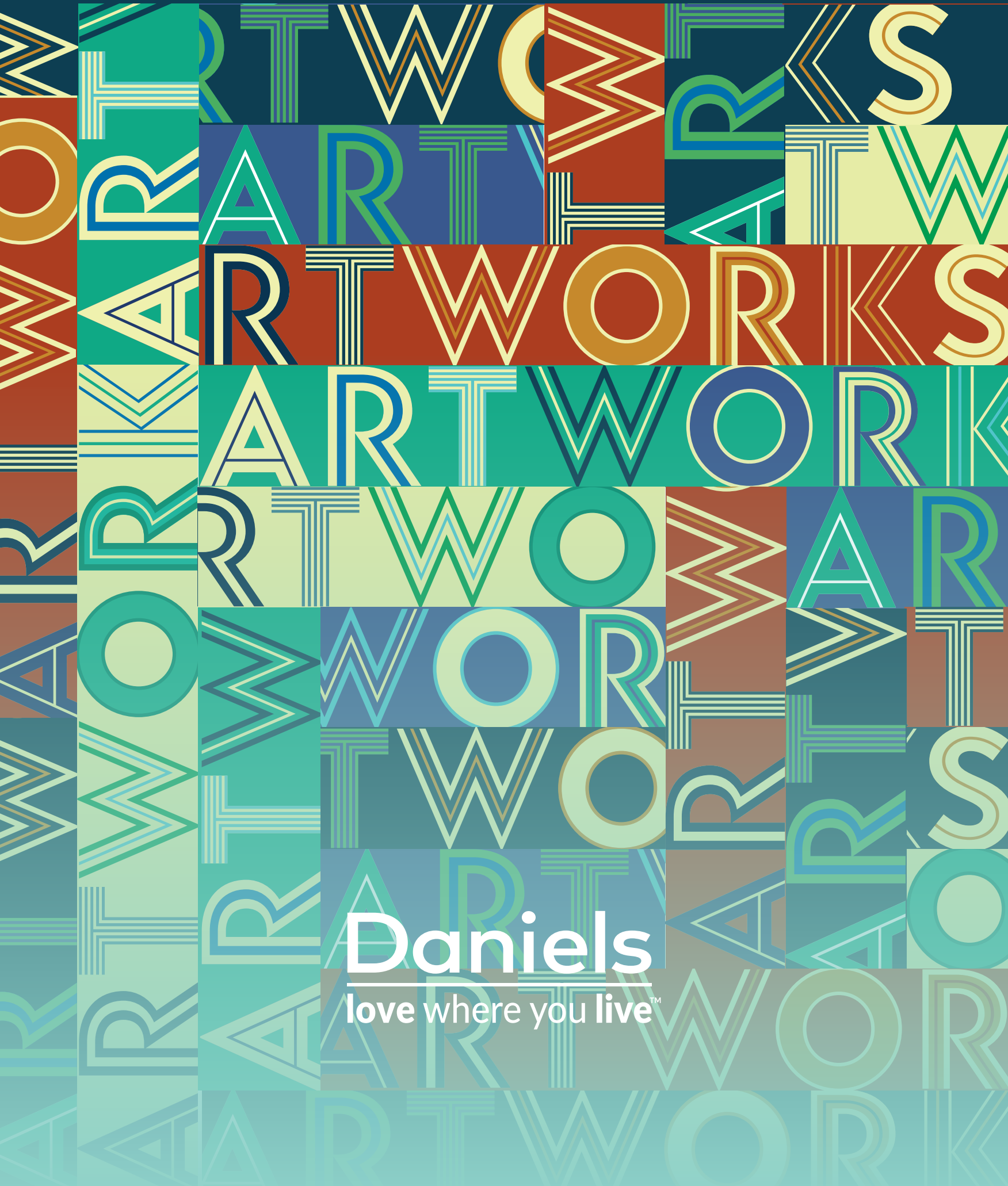


SAKINA'S SEWING CIRCLE

live creatively

ARTWORKS

ARTWORKSTOWER.COM



Daniels

love where you live™